

# Public Information Meeting

Muskegon Heights High School  
2441 Sanford Street  
Muskegon Heights, MI 49444

**Thursday, December 19, 2013**

**6:00 p.m.**

**Gregory Weatherspoon**

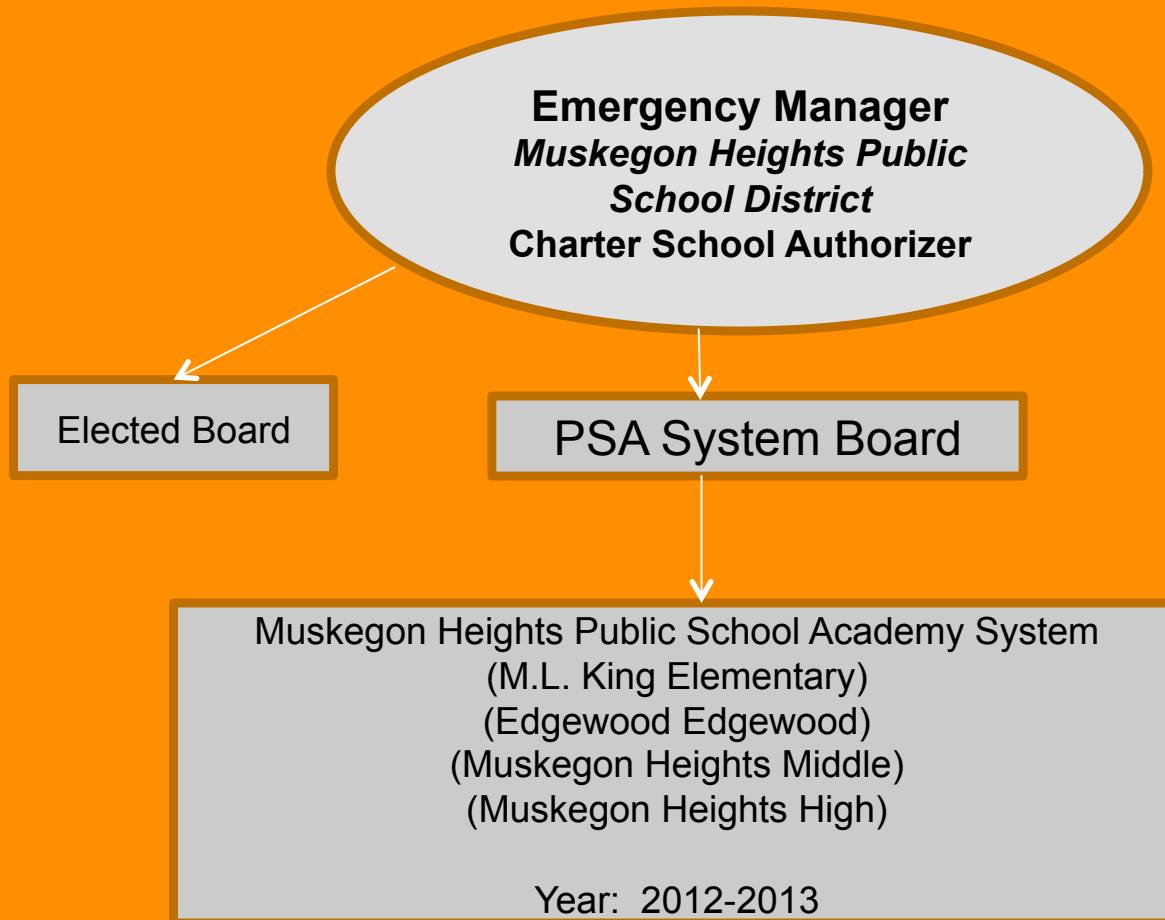
**Emergency Manager**

## Definitions

- PSA = Public School Academy
- PSA System = The Former District and its Schools
- FTE = Full Time Equivalent
- Authorizer = Is a Public Educational Institution including an (ISD), Higher Education, or (LEA) granted the Authority by Public Acts of Michigan (School Code) to issue Charters
- ISD = Intermediate School District
- LEA = Local Educational Agency

# **Schools Authorized by Muskegon Heights Public Schools**

## **Emergency Manager**



# Authorizer/Emergency Manager

## Role:

- Provide Oversight and Monitoring of PSA Academic Performance
- Ensure Compliance with Contracts and All Applicable Law
- Monitor and Review PSA Fiscal Operations
- Ensure all Boards Hold Public Meetings as Required by Law

### **Muskegon Heights Public School Academy System**

Carmella Ealom

Arthur Scott

Darryl Todd

### **Muskegon Heights Public Schools District**

Franklin Brewer

Margorie Cook

Mark Glover

Kassandra Kitchen

Estelita Rankin

Trinell Scott

Peggy Selmon

## Authorizer Accountability Assessment Chart

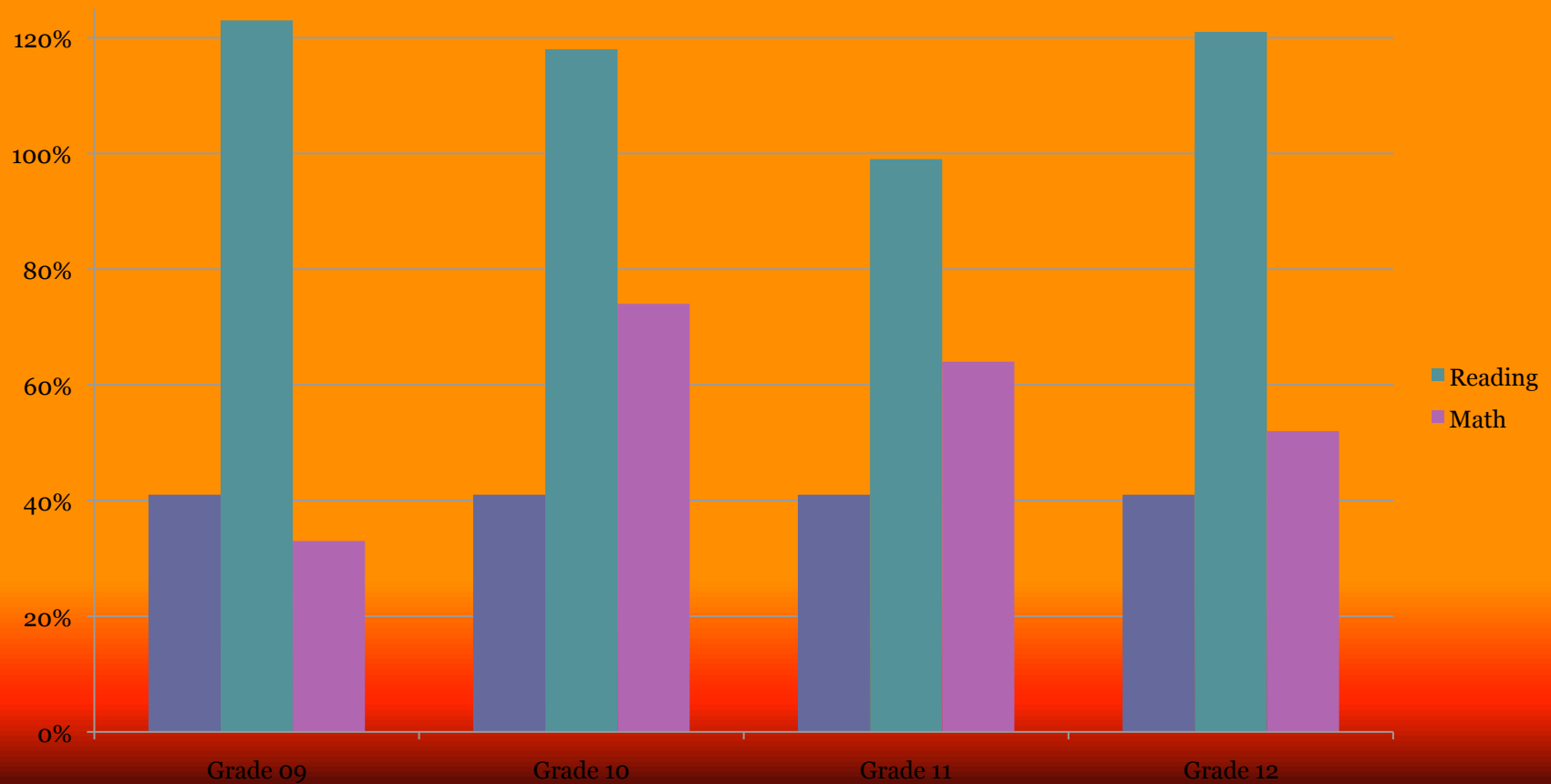
Responsible	Publisher	Assessment/Subject Name	K	1	2	3	4	5	6	7	8	9	10	11	12
Authorizer	Learning.com	AHA/Math	X	X	>	>	>	>							
Authorizer	Learning.com	Study Dog/Reading	X	X	>										
Public School Academics	Scantron	(Performance Series)/Reading	X	X	>	>	>	>	>	>	>				
Public School Academics	Scantron	(Performance Series)/Math	X	X	>	>	>	>	>	>	>				
Michigan Department of Education	MEAP	English Language Arts/Literacy				>	>	>	>	>	>				
Michigan Department of Education	MEAP	Mathematics				>	>	>	>	>	>				
HP Public School Academy System	Act, Inc.	EXPLORE/Reading, Mathematics, Science, English									>	>			
HP Public School Academy System	ACT, Inc.	PLAN/Reading, Mathematics, Science, English											X		
Michigan Department of Education	ACT/MME	Reading, Mathematics, Science, English												X	X

# **Muskegon Heights Public School Academy System**

Achievement Data  
Report to Board of Education  
December 16, 2013

# MHPSAS High School

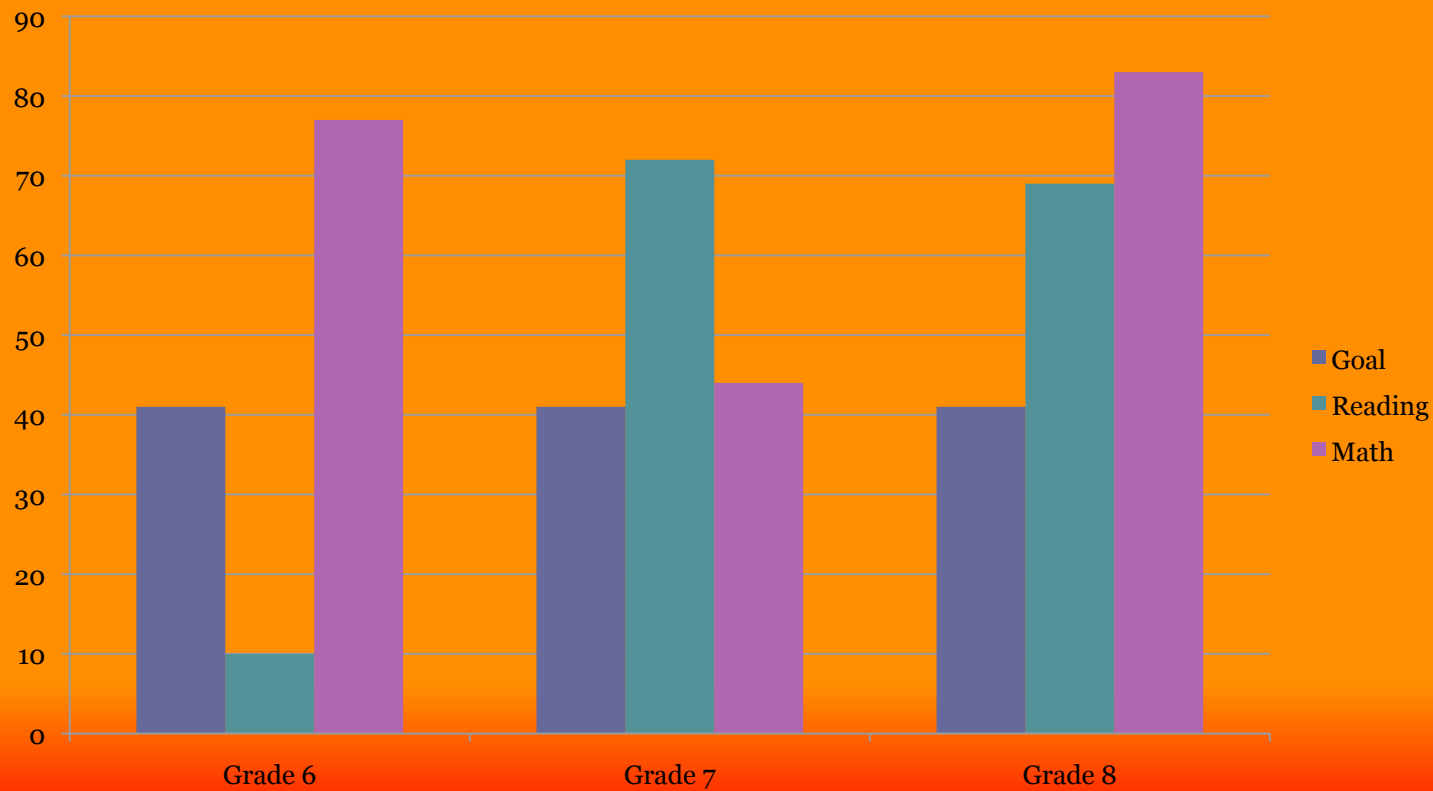
## Student Growth - September to November 2013



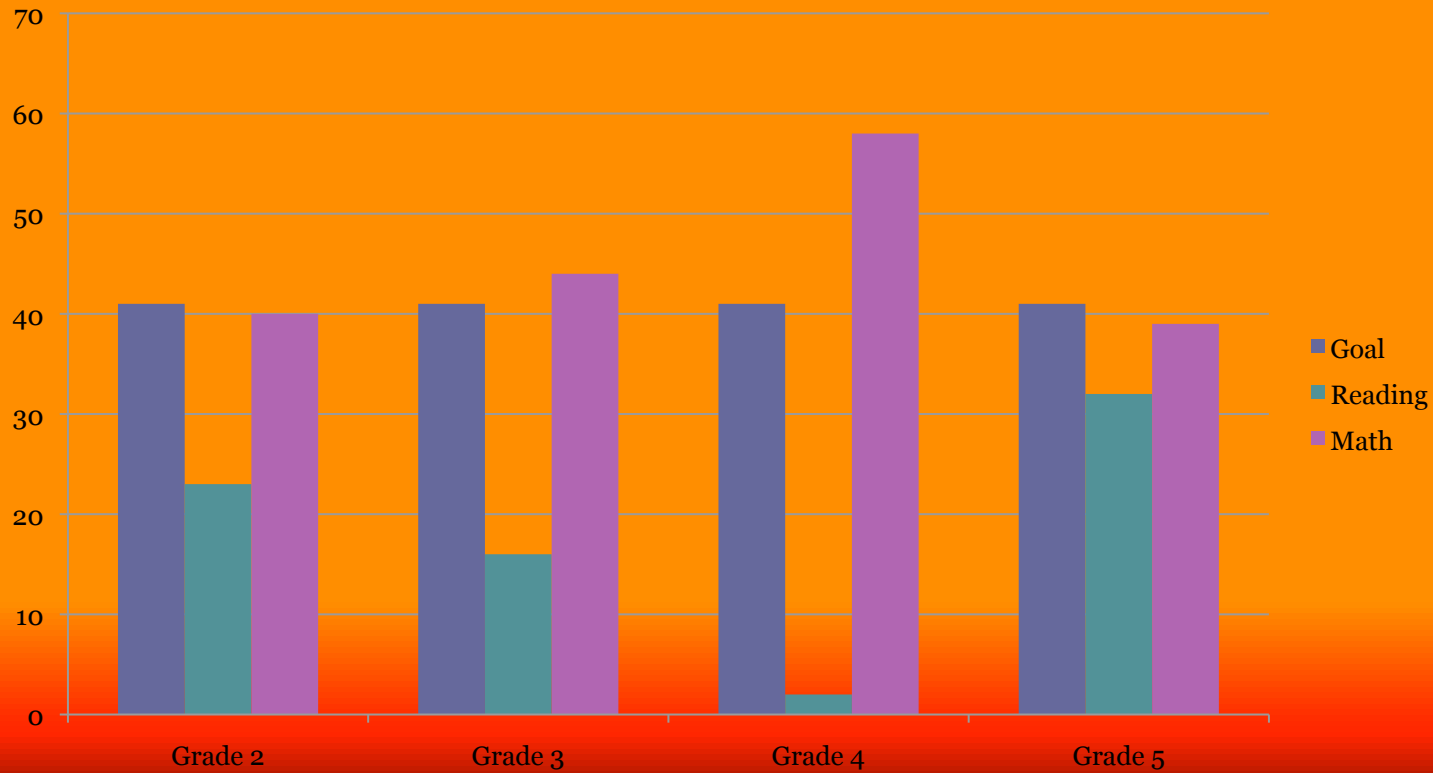


# MHPSAS Middle School

## Student Growth – September to November 2013



# Edgewood Elementary School Student Growth - September to November 2013



# Summary

- Growth in in all grades, higher in math than in reading
- Overall reading achievement in high school is extremely high
- Attendance – All schools over 90% in daily average attendance
- Discipline – Decrease in overall disciplinary infractions at every level
- Teacher professional development aligned to school improvement plan
- Intervention plans in place at all levels

## Muskegon Heights Public Schools PSA Enrollment Statistics 2013-14

SCHOOL	2013-2014 Enrollment	MHPAS Residents	Other Residents	% of Residents
M.L. King Elementary	199.00	190.00	9.00	95%
Edgewood Elementary	238.00	233.00	5.00	98%
Muskegon Heights Middle School	206.00	191.00	15.00	93%
Muskegon Heights High School	259.00	229.00	30.00	88%
<b>GRAND TOTALS</b>	<b>902.00</b>	<b>843.00</b>	<b>59.00</b>	<b>93%</b>

**2010 Census Data  
City of Muskegon Heights  
Population: 10,856**

<u>Age Group</u>	<u>Population</u>	<u>Percent</u>
5-9:	965	8.9%
10-14:	878	8.1%
<u>15-19:</u>	<u>877</u>	<u>8.1%</u>

**Total: 5-19: 2720 students**

Note:  $843/2720=31\%$  of all possible school aged students are in our schools.

# Student Mobility Report-Outgoing General Education FTE's by Educating District 2012-13 Fall Count

SCHOOL	0	1	2	3	4	5	6	7	8	9	10	11	12	Total
Fruitport Community Schools	3.00	1.00	1.00	0.00	2.00	0.00	1.00	1.00	1.00	2.00	1.00	0.66	1.00	14.66
Mona Shores Public School District	6.00	8.00	9.00	9.00	13.00	10.00	10.00	13.00	16.00	10.00	7.00	15.00	6.00	132.00
Muskegon, Public Schools of the City of	16.00	14.00	17.00	21.00	16.00	14.00	14.00	16.00	12.00	33.33	29.83	21.00	15.00	239.16
Orchard View Schools	1.00	0.00	2.00	0.00	0.00	0.00	2.00	0.00	6.00	0.00	36.41	1.00	4.00	52.41
Ridge Park Charter Academy	1.00	0.00	0.00	1.00	0.00	1.00	0.00	0.00	2.00	0.00	0.00	0.00	0.00	5.00
Three Oaks Public School Academy	2.00	8.00	15.00	15.00	16.00	9.00	0.00	0.00	0.00	0.00	0.00	0.00	0.00	65.00
Timberland Academy	17.00	13.00	16.00	14.00	10.00	15.00	22.00	11.00	12.00	0.00	0.00	0.00	0.00	130.00
Walden Green Montessori	1.00	1.00	0.00	2.00	2.00	2.00	0.00	0.00	0.00	0.00	0.00	0.00	0.00	8.00
North Muskegon Public Schools	0.00	1.00	0.00	0.00	0.00	0.00	0.00	1.00	0.00	1.00	2.00	1.00	0.00	6.00
Reeths-Puffer Schools	0.00	2.00	1.00	1.00	0.00	3.00	3.00	0.00	1.00	0.00	2.00	1.00	3.00	17.00
West MI Academy of Arts and Academics	0.00	2.00	0.00	0.00	0.00	0.00	1.00	0.00	0.00	0.00	0.00	0.00	0.00	3.00
Muskegon Area ISD - District created from ISD	0.00	1.00	0.00	0.00	0.00	0.00	0.00	0.00	1.00	1.00	2.00	1.00	0.00	6.00
Michigan Virtual Charter Academy	0.00	1.00	0.00	1.00	0.00	0.00	0.00	0.00	0.00	0.00	0.00	0.00	0.00	2.00
WayPoint Academy	0.00	0.00	0.00	0.00	0.00	0.00	1.00	13.00	3.00	5.00	2.00	7.00	2.00	33.00
<b>Total</b>	<b>47.00</b>	<b>52.00</b>	<b>61.00</b>	<b>64.00</b>	<b>59.00</b>	<b>54.00</b>	<b>54.00</b>	<b>55.00</b>	<b>54.00</b>	<b>52.33</b>	<b>82.24</b>	<b>47.66</b>	<b>31.00</b>	<b>713.23</b>
Muskegon Heights Public School Academy	102.00	112.00	88.00	77.00	68.00	71.00	81.00	83.00	93.00	74.00	74.60	64.40	51.00	1039.00
<b>GRAND TOTALS</b>	<b>149.00</b>	<b>164.00</b>	<b>149.00</b>	<b>141.00</b>	<b>127.00</b>	<b>125.00</b>	<b>135.00</b>	<b>138.00</b>	<b>147.00</b>	<b>126.33</b>	<b>156.84</b>	<b>112.06</b>	<b>82.00</b>	<b>1752.23</b>

**School Finance**

**Emergency Manager**

## All Muskegon Heights Taxable Values

**2013**                      **\$113,781,675**

**2012**                      **\$121,730,221**

**2011**                      **\$133,073,676**



## Non Homestead Taxable Values

<b>2013</b>	<b>\$67,693,181</b>
<b>2012</b>	<b>\$72,309,403</b>
<b>2011</b>	<b>\$72,951,824</b>

## 2013 Tax Year Millage Rates

Non Homestead	18.00 Mills
Debt Retirement	12.50

## What is a “Mill”?

Many state and local jurisdictions raise money from property taxes based on the value of the land each person or business owns. The mill levy represents how much of your property's taxable value will be charged in real estate taxes. Each "mill" represents a tax of one-thousandth of a dollar for each dollar of the assessed value of the property (from the prefix "milli-," or "thousandth)

## Tax Collections (Operating Only)

2013 (Projected)	\$1,218,447
2012	\$1,286,625
2011	\$1,295,450

## Tax Collections (All Millages)

2013 (Projected)	\$2,640,717
2012	\$2,778,617
2011	\$2,812,089

## Sources of Revenues 2013 (Projected)

Property Taxes (Operations)	\$1,218,447
Authorizer Fees	<u>\$207,345</u>
Total Projected Operational Revenue	\$1,425,792
Debt Service	<u>\$1,422,270</u>
Total Projected Revenues	<u>\$2,848,062</u>

# Muskegon Heights Public Schools

## Statement of Revenues, Expenditures, and Changes in Fund Balance (Unaudited) for Year Ended June 30, 2013

	General Fund
Revenue	
Local Sources	\$ 1,415,755
State Sources	(27,105)
Federal Sources	989,742
Other	8,457
Total Revenue	2,386,849
Expenditures	
Current	
Instruction	285,778
Support Services	1,941,325
Athletics	3,567
Community Services	36,142
Other	226,781
Total Expenditures	2,493,593
Excess of Revenue Over (Under) Expenditures	(106,744)
Other Financing Sources (Uses)	
Loans from State of Michigan	11,150,000
Net Change in Funds Balances (Deficit)	11,043,256
Fund Balance (Deficit) - Beginning of 2012/13	(11,896,251)
Fund Balance (Deficit) - End of year	(852,995)

## Muskegon Heights Public Schools Balance Sheet (Unaudited), June 30, 2013

	General Fund
<b>Assets</b>	
Cash and investments	\$ 2,759,377
Receivables	164,112
Inventories	442
Due from other funds	225
Due from other governmental units	61,112
	2,985,268
Total Assets	2,985,268
<b>Liabilities and Fund Balances (Deficit)</b>	
Liabilities	
Accounts Payable	\$ 883,429
Accrued Payroll Liabilites	2,413,976
Due to other funds	453,019
Due to other governmental units	41,853
Deferred Revenue	45,985
	3,838,262
Total Liabilities	3,838,262
Fund Balances	
Unassigned	(852,994)
Total Liabilities and fund balances	2,985,268



# Muskegon Heights Public School Academy System

**Muskegon Heights Public School Academy System**  
**Governmental Funds**  
**Statement of Revenues, Expenditures and Changes in Fund Balances**  
**For the Year Ended June 30, 2013**

	General Fund	Capital Projects Fund	Nonmajor Governmental Fund	Total Governmental Funds
			Special Revenue Food Service Fund	
<b>Revenues</b>				
Local sources	\$ 101,774	\$ -	\$ 1,604	\$ 103,378
State sources	8,830,535	-	-	8,830,535
Federal sources	941,228	-	849,244	1,790,472
Interdistrict sources	133,830	-	-	133,830
Total revenues	10,007,367	-	850,848	10,858,215
<b>Expenditures</b>				
Current				
Education				
Instruction	4,237,356	-	-	4,237,356
Supporting services	5,716,938	-	-	5,716,938
Food services	-	-	828,130	828,130
Community services	11,807	-	-	11,807
Facilities acquisition	-	554,725	-	554,725
Capital outlay	95,417	-	-	95,417
Debt service				
Principal	3,934	-	-	3,934
Interest and other expenditures	3,156	-	-	3,156
Total expenditures	10,068,608	554,725	828,130	11,451,463
Excess (deficiency) of revenues over expenditures	(61,241)	(554,725)	22,718	(593,248)

See Accompanying Notes to Financial Statements  
4 - 6




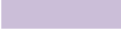
**Muskegon Heights Public School Academy System**  
**Governmental Funds**  
**Statement of Revenues, Expenditures and Changes in Fund Balances**  
**For the Year Ended June 30, 2013**

	General Fund	Capital Projects Fund	Nonmajor Governmental Fund Special Revenue Food Service Fund	Total Governmental Funds
<b>Other Financing Sources (Uses)</b>				
Capital leases	62,204	-	-	62,204
Net change in fund balance	963	(554,725)	22,718	(531,044)
Fund balance - beginning	-	-	-	-
Fund balance - ending	\$ 963	\$ (554,725)	\$ 22,718	\$ (531,044)

See Accompanying Notes to Financial Statements  
4 - 7

# Muskegon Heights Public Schools Property

MHPS Property	Address	Status	Notes
High School	2441 Sanford Street	Leased To Mosaica	Charter School
Middle School	55 East Sherman	Leased To Mosaica	Charter School
Edgewood School	3028 Howden	Leased To Mosaica	Charter School
King School	600 East Barney	Leased To Mosaica	Charter School
Bus Garage	2603 Leahy	Leased To Mosaica	Charter School
Administration Building	2603 Leahy		Still in use by District.
Loftis School	2301 Sixth Street	Sold	Sold June 2013
Lindbergh School	160 East Barney	Donated to the State of Michigan Land Bank	Donated June 2013
Glendale School	3001 Jefferson Street	Donated to the State of Michigan Land Bank	Donated June 2013
Roosevelt School	525 West Summit	Donated to the State of Michigan Land Bank	Donated June 2013

	Buildings owned by MHPS and leased to Mosaica
	Buildings owned by MHPS
	Buildings sold to a private owner
	Buildings donated to the State of Michigan Land Bank

## Moving Forward

- Negotiate Debt Repayments
- Analyzing Student Achievement Data and Set Annual Growth Targets
- Student Recruiting Campaigns

Questions?

Reflecting Back to the Beginning

## Contact Information

Gregory Weatherspoon

[weatherg@mhpsnet.org](mailto:weatherg@mhpsnet.org)

Phone: 231-830-3221

Alena Zachery-Ross

[azachery@mosaicaeducation.com](mailto:azachery@mosaicaeducation.com)

Phone: 231-830-3703